



MacKenzie

The Mackenzie Collection features a traditional tartan plaid pattern applied to the surface of our Satin Suede. This effortless transfer pattern on a soft satin suede base creates a stunning visual effect, injecting elements of dimension and texture that accentuate the leather’s tactile qualities and luxurious nap. The end result is leather with enhanced durability that draws you in with its lavish glamour.

This is made to order. Production time is 2-3 weeks. Samples are stocked in limited quantity and may not be immediately available.

Features

- Traditional tartan plaid pattern
- Elements of dimension and texture
- Satin Suede base leather

Avg. Hide Size

16-18 sq ft
1.49

Avg. Thickness

1.3-1.5 mm

Country of Origin

Spain

Tannage

Chrome

Finish

Suede

Character

Suede

Hide Type

Bovine

Configuration

Double Butt

Testing

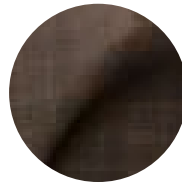
Upon Request Only



Adriatic Brown Dust Matte



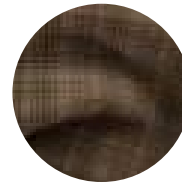
Cream Brown Dust Matte



Smoke Brown Dust Matte



Stormy Brown Dust Matte



Stormy Taupe Pearl



Super White Brown Dust Matte