



## Dovetail

The Dovetail collection features a simple yet elegant dovetail design on our Satin Suede base. Dynamic metallic transfer patterns on a soft satin suede base create a stunning visual effect, injecting elements of dimension and texture that accentuate the leather’s tactile qualities and luxurious nap. The end result is leather with enhanced durability that draws you in with its lavish glamour and modern elegance.

This is made to order. Production time is 2-3 weeks. Samples are stocked in limited quantity and may not be immediately available.

### Features

- Simple metallic pattern
- Satin Suede base

#### Avg. Hide Size

16 - 18 sq ft  
1.49 - 1.67 sq m

#### Avg. Thickness

1.3-1.5mm

#### Country of Origin

Spain

#### Tannage

Chrome

#### Base Leather

Satin Suede

#### Finish

Suede

#### Character

Suede

#### Grain

Split

#### Hide Type

Bovine

#### Configuration

Double Butt

#### Testing

Upon Request Only



Black Anthracite



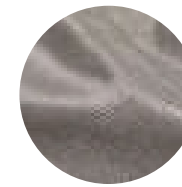
Cream Iced



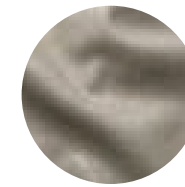
Cream Zinc



Natural Copper Bronze



Stormy Anthracite



Stormy Hammered Silver