



Deer Run

A full grain upholstery leather featuring a natural milled texture and a garment type tannage. Thus the creation of a soft, supple, and sensuous upholstery leather.

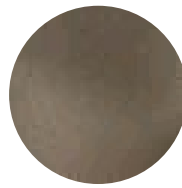
Deer Run is a natural leather, but with enough protection to provide excellent physicals such as wet dry rubs, abrasion resistance, and excellent light stability. Very large hides (50-55 sq ft average) provide exceptional cutting yields and only the top 30% of the selection go back into this article. A broad range of "today" colors further enhances this leather.



Bitter Chocolate



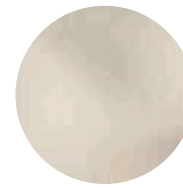
Black



Buckskin



Caramel



Cream



Godiva



Merlot



Mineral



Shadow



Tuscany



Willow

Features

- Semi-aniline leather with increased color consistency
- Pronounced pebble grain and supple hand
- Vibrant color palette
- Natural characteristics will not be visible
- Ideal for public spaces

Avg. Hide Size

50 - 55 sq ft
4.65 - 5.11 sq m

Avg. Thickness

1.2-1.4mm

Country of Origin

Korea, South

Tannage

Chrome

Finish

Semi-Aniline

Character

Pebbled

Grain

Full Grain

Hide Type

Bovine

Configuration

Whole Hide

Testing

CA-117, NFPA-260