



Valdesa

Crafted in Italy from New Zealand sheepskin, Valdesa is one of this season's most striking standouts. Tanned exclusively from vegetable extracts, it features a unique washing process during tanning that imparts it with a beautiful, authentically aged appearance. This process also shrinks the hides slightly to accentuate their natural grain and add elements of alluring texture to the surface. The end result is a soft and drapey leather with a genuine worn-in aesthetic that exudes classic style and timeless appeal.

Small minimum order quantities may apply.

Contact Us:

Phone: 800.737.0169

Email: hello@mooreandgiles.com

or use our chat feature below



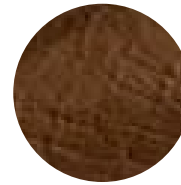
Black



Bone



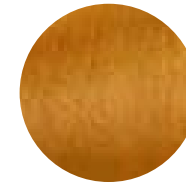
Burgundy



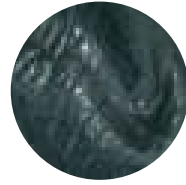
Cigar



Fern



Goldenrod



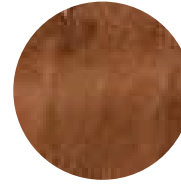
Meadow Elk



Putty



Rainforest



Umber



Wolf

Features

- An aniline leather with a soft, drapey hand
- Full bodied with a translucent polished surface
- Natural characteristics will be visible

Avg. Hide Size

6-8
0.56

Avg. Thickness

1-1.2mm

Country of Origin

New Zealand

Tannage

Vegetable

Finish

Aniline Plus

Character

Naturally Milled

Grain

Full Grain

Hide Type

Sheep

Configuration

Whole Hide

Testing

CA-117, Abrasion and Colorfastness