



Tiburon

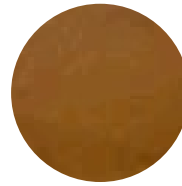
Blurring the lines of form and function, Tiburon is hand-crafted in Italy with a semi-aniline finish, allowing it to thrive in many scenarios. Each hide averages upwards of 50 square feet in size, allowing for an excellent cutting yield, and offers color consistency with a subtle tone-on-tone finish spanning throughout, making it a go-to choice for a variety of upholstery needs.



Cream



Mink



Saddle



Smoke

Features

- Soft hand and feel
- Color uniformity
- Durable semi-aniline finish

Avg. Hide Size

45-50 sq ft
4.18

Avg. Thickness

1.0-1.2 mm

Country of Origin

Italy

Tannage

Chrome

Finish

Semi-Aniline

Character

Smooth

Hide Type

Bovine

Configuration

Whole Hide

Grain

Full Grain

Testing

CA-117 PASS