



Teju Lizard

Teju Lizard features an exotic pattern on our satin suede that emulates the teju lizard of the desert. A luxurious suede from the finest suede tannery located in Valencia, Spain. The leather goes through a treatment in the tanning process, which imparts water repellency properties from face to front for better and easier maintainability. A unique transfer process is applied to the leather with heat and pressure to create a modern, angled variation of a Scottish tartan plaid while maintaining the beautiful properties of the suede.

A unique heat-transfer process allows for any color combination to be firmly embedded on the leather’s surface with the most intricate of detail. A modern interpretation of a trendy, sought-after design, the suede’s soft nap combined with the pattern’s metallic sheen results in a leather that is overwhelmingly appealing to the eye and to the touch.

This is made to order. Production time is 2-3 weeks. Samples are stocked in limited quantity and may not be immediately available.

Features

- Exotic lizard transfer pattern on soft drapey aniline suede

Avg. Hide Size
 16 - 18 sq ft
 1.49 - 1.67 sq m

Country of Origin
 Spain

Tannage
 Chrome

Base Leather
 Satin Suede

Finish
 Suede

Character
 Suede

Grain
 Split

Hide Type
 Bovine

Configuration
 Double Butt

Hor. Plate Ln

Testing



Black Multi Bronze



Blue Moon Glaze



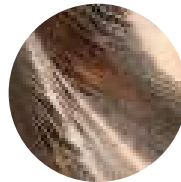
Buttercup



Buttercup Multi Bronze



Cream



Cream Multi Bronze



Cream Multi Pewter



Smoke Matte



Stormy



Stormy Matte



Taupe Copper Bronze

