



Tartan

A luxurious suede from the finest suede tannery located in Valencia, Spain. The leather goes through a treatment in the tanning process, which imparts water repellency properties from face to front for better and easier maintainability. A unique transfer process is applied to the leather with heat and pressure to create a modern, angled variation of a Scottish tartan plaid while maintaining the beautiful properties of the suede.

This is made to order. Production time is 2-3 weeks. Samples are stocked in limited quantity and may not be immediately available.



Features

- Rich, saturated color with water repellent tannage
- Luxurious short nap
- Suitable for guestroom and low-traffic areas

Avg. Hide Size

16-18 sq ft
1.49

Avg. Thickness

1.3-1.5 mm

Country of Origin

Spain

Tannage

Chrome

Finish

Suede

Character

Suede

Grain

Split

Hide Type

Bovine

Configuration

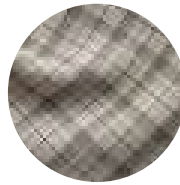
Double Butt

Testing

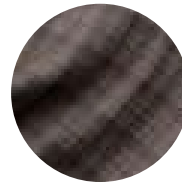
CA-117



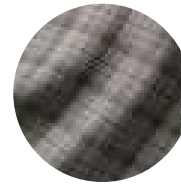
Black Super Black Matte



Cream Super Black Matte



Smoke Super Black Matte



Stormy Super Black Matte



Taupe Super Black Matte