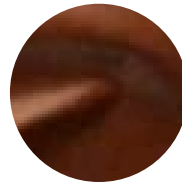




Black



Nutmeg

## Symphony

Crafted in New Zealand, Symphony is one of the season's most elegant introductions. Taking its cue from some of the most coveted leathers on the runway, it features a buttery, soft hand and an inherent drapiness that is luxuriously lightweight. When upholstered, the depth of this leather is further enhanced by a subtle pull-up effect that imparts it with a refined and tailored aesthetic.

### Features

- Buttery, soft hand
- Luxuriously lightweight
- Subtle pull-up effect

#### Avg. Hide Size

35 – 40 sq ft  
3.25 – 3.72 sq m

#### Avg. Thickness

1-1.2mm

#### Country of Origin

New Zealand

#### Tannage

Chrome

#### Finish

Aniline Plus

#### Character

Smooth

#### Grain

Full Grain

#### Hide Type

Bovine

#### Configuration

Whole Hide

#### Testing

Upon Request Only