



## Storm

A new full-bodied leather from Italy that provides the perfect blend of a Nubuck and a traditional oil/wax pull up leather. Once the leather is dressed with wax and oil, it is then washed to create a beautiful canvas of color tones and a unique surface feel. The leather is then polished to highlight these subtle contrasts and provide a more casual, less distressed appearance, reminiscent of the gently worn appearance seen in many garment leathers.

### Features

- Dressed with wax and oil
- Washed for a unique surface feel
- Polished to highlight subtle contrasts

#### Avg. Hide Size

50 sq ft  
4.65

#### Avg. Thickness

1.2-1.4 mm

#### Country of Origin

Italy

#### Tannage

Chrome

#### Finish

Nubuck

#### Character

Suede

#### Hide Type

Bovine

#### Configuration

Whole Hide

#### Testing

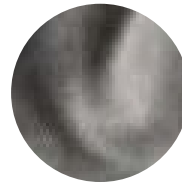
Upon Request Only



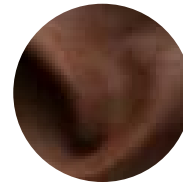
Beige



Black



Blue Dusk



Bourbon



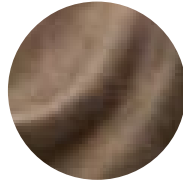
Chocolate



Cream



Heather Gray



Slate