



Riccio

Riccio features a dressed-up herringbone pattern on a Satin Suede base that was inspired by the Riccio sterling silver jewelry of Italy. The end result is a leather that draws you in with its lavish glamour and modern elegance.

This is made to order. Production time is 2-3 weeks. Samples are stocked in limited quantity and may not be immediately available.

Features

- Herringbone pattern on suede
- Reminiscent of Italian Riccio sterling silver jewelry
- Soft surface with elements of dimension

Avg. Hide Size

16 - 18 sq ft
1.49 - 1.67 sq m

Avg. Thickness

1.3-1.5mm

Country of Origin

Spain

Tannage

Chrome

Base Leather

Satin Suede

Finish

Suede

Character

Suede

Grain

Split

Hide Type

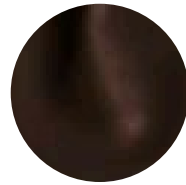
Bovine

Configuration

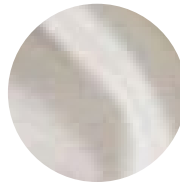
Double Butt

Testing

CA-117, NFPA-260



Chocolate Bronze Pearl



Cream Taupe Pearl



Smoke Taupe Pearl



Stormy Copper Pearl



Stormy Radiant Silver



Stormy Taupe Pearl



Taupe Taupe Pearl