



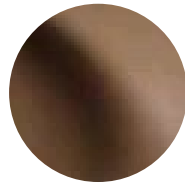
Queenstown



Almond



Black



Taupe



Vellum

Features

- Exquisitely soft sheepskin
- Consistent color throughout
- Supple hand
- Small hide size

Avg. Hide Size

6-8
0.56

Avg. Thickness

0.8-1mm

Country of Origin

Spain

Tannage

Chrome

Finish

Aniline Plus

Character

Smooth

Grain

Full Grain

Hide Type

Sheep

Configuration

Whole Hide

Testing

CA-117, NFPA-260