



## Palace Point

Our Palace Point Collection features an elegant paisley pattern that echoes the exotic on our Satin Suede base. This dynamic pattern creates a stunning visual effect on the suede's soft surface, injecting elements of dimension and texture that accentuate the leather's tactile qualities and luxurious nap. The end result is a leather with enhanced durability that draws you in with its lavish glamour and modern elegance.

This is made to order. Production time is 2-3 weeks. Samples are stocked in limited quantity and may not be immediately available.

### Features

- Elegant metallic paisley transfer pattern
- Satin Suede base material
- Suitable for moderate to high traffic applications - please contact customer care for more information

#### Avg. Hide Size

16 - 18 sq ft  
1.49 - 1.67 sq m

#### Avg. Thickness

1.3-1.5mm

#### Country of Origin

Spain

#### Tannage

Chrome

#### Base Leather

Satin Suede

#### Finish

Suede

#### Character

Suede

#### Grain

Split

#### Hide Type

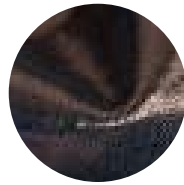
Bovine

#### Configuration

Double Butt

#### Testing

Upon Request Only



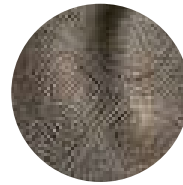
Blue Moon Bronze



Buttercup Multi Bronze



Cream Hammered Silver



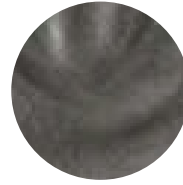
Cream Multi Bronze



Espresso Multi Bronze



Sky Blue Antique Gold



Smoke Grey Cloud Matte



Smoke Taupe Pearl



Taupe Taupe Pearl