



# Notting Hill

## Features

- Lightly polished aniline leather featuring a soft, drapey hand
- Inspired by garment leather
- Extensive color palette
- Natural characteristics will be visible

### Avg. Hide Size

50 sq ft  
4.65

### Country of Origin

Italy

### Finish

Aniline Plus

### Grain

Full Grain

### Configuration

Whole Hide

### Avg. Thickness

1-1.2mm

### Tannage

Chrome

### Character

Smooth

### Hide Type

Bovine

### Testing

CA-117, NFPA-260, Crib5



Amethyst



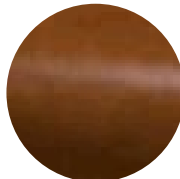
Black



Blush



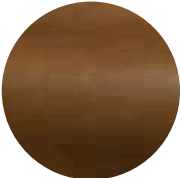
Bottle



Bourbon



Brass



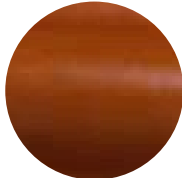
Brown



Charcoal



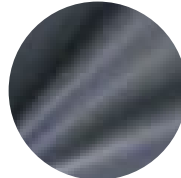
Chocolate



Copper



Juniper



Lake



Parchment



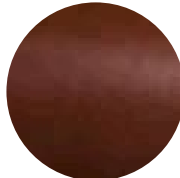
Putty



Steel



Vellum



Walnut



Woodland