



# Notting Hill Metallic

## Features

- Aniline dyed
- Subtle metallic finish
- Soft hand
- Lightly polished surface

### Avg. Hide Size

50 sq ft  
4.65

### Avg. Thickness

1-1.2mm

### Country of Origin

Italy

### Tannage

Chrome

### Finish

Aniline Plus

### Character

Smooth

### Grain

Full Grain

### Hide Type

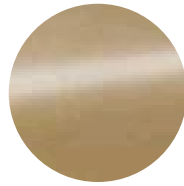
Bovine

### Configuration

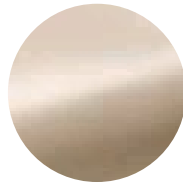
Whole Hide

### Testing

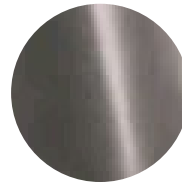
CA-117, IMO 652, UFAC



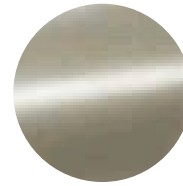
Champagne



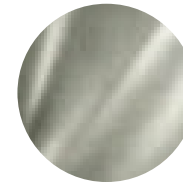
Creamsicle



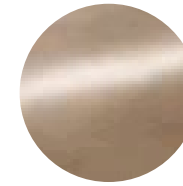
Limestone



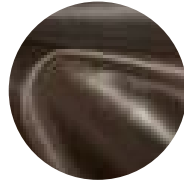
Maritime



Nickel



Platinum



Quartz