



# Manhattan

## Features

- Aniline dyed
- Milled for character
- Soft hand
- Polished appearance
- casual aesthetic

### Avg. Hide Size

36 sq ft  
3.34

### Country of Origin

India

### Finish

Semi-Aniline

### Grain

Full Grain

### Configuration

Whole Hide

### Avg. Thickness

1.1-1.3mm

### Tannage

Chrome

### Character

Naturally Milled

### Hide Type

Buffalo

### Testing

Upon Request Only



Adriatic



Blade



Caribe



Dolphin



Driftwood



Dune



Horizon



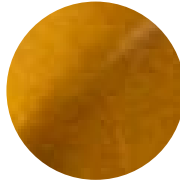
Mushroom



Scarlet



Sycamore



Tumeric