



Kipling

Features

- Aniline leather featuring a lightly polished, tight grain
- Designed to replicate the look of calf
- Extensive color palette
- Natural characteristics will be visible

Avg. Hide Size

45 sq ft
4.18

Country of Origin

Spain

Finish

Aniline Plus

Grain

Full Grain

Configuration

Whole Hide

Avg. Thickness

1-1.2mm

Tannage

Chrome

Character

Smooth

Hide Type

Bovine

Testing

CA-117, NFPA-260, Crib 5, UFAC, IMO 652, ASTM D 4157-13 Wyzenbeek



Acorn



Black



Burnt Umber



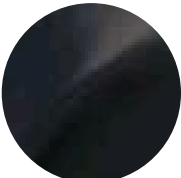
Canary Yellow



Cinnamon



Denim



Dolphin



Feather Gray



Ivory



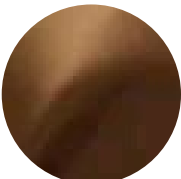
Linen



Mellow Yellow



Metallic Brass



Metallic Bronze



Metallic Nickel



Metallic Onyx



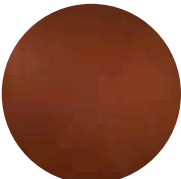
Mink



Parchment



Pesto



Red Squirrel



Sky Blue



Taupe