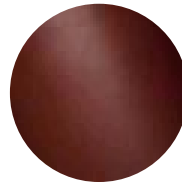
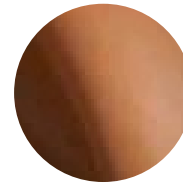




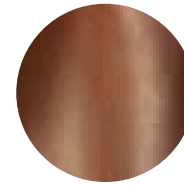
Black



Cognac



Natural



Red Clay

## Jefferson

Crafted in South America and available in four colors, Jefferson is a traditional belting leather with a firm hand and a slight polish for designers looking for a heavier weight option. Hides are side cuts from butt to shoulder with no belly area and will average 3.8-4.0 mm in weight and 25 square feet in size.

**Minimum order quantities apply.**

*Contact Us:*

*Phone:* [800.737.0169](tel:800.737.0169)

*Email:* [hello@mooreandgiles.com](mailto:hello@mooreandgiles.com)

*or use our chat feature below*

---

### Features

- Vegetable tanned leather featuring a lightly polished, tight grain, and firm hand
- Natural characteristics will be visible

#### Avg. Hide Size

25 sq ft  
2.32

#### Avg. Thickness

3.8-4.0mm

#### Country of Origin

Brazil

#### Tannage

Vegetable

#### Finish

Semi-Aniline

#### Character

Smooth

#### Grain

Full Grain

#### Hide Type

Bovine

#### Configuration

Half Hide

#### Testing

CA-117, NFPA-260