



Herringbone

The Herringbone collection features a chic metallic herringbone pattern on our Satin Suede base. Dynamic metallic transfer patterns on a soft satin suede base create a stunning visual effect, injecting elements of dimension and texture that accentuate the leather’s tactile qualities and luxurious nap. The end result is leather with enhanced durability that draws you in with its lavish glamour and modern elegance.

This is made to order. Production time is 2-3 weeks. Samples are stocked in limited quantity and may not be immediately available.

Features

- Metallic herringbone transfer pattern
- Satin Suede base

Avg. Hide Size

16 - 18 sq ft
1.49 - 1.67 sq m

Avg. Thickness

1.3-1.5mm

Country of Origin

Spain

Tannage

Chrome

Base Leather

Satin Suede

Finish

Suede

Character

Suede

Grain

Split

Hide Type

Bovine

Configuration

Double Butt

Testing

Upon Request Only



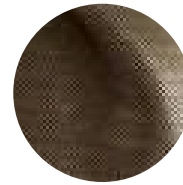
Black Pearl



Cream Glaze



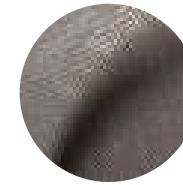
Cream Pearl



Espresso Antique Gold



Espresso Black Pearl



Smoke Hammered Silver