



Echo

Features

- Natural aniline wax pull-up leather
- Color transparency and vibrant pull-up
- Tight grain with a drapey hand
- Rich color palette
- Will burnish and patina with wear
- Natural characteristics will be visible

Avg. Hide Size

50 - 55 sq ft
4.65 - 5.11 sq m

Country of Origin

Italy

Finish

Aniline Plus

Grain

Full Grain

Configuration

Whole Hide

Avg. Thickness

1-1.2mm

Tannage

Chrome

Character

Smooth

Hide Type

Bovine

Testing

CA-117, NFPA-260, ASTM
D 4157-13 Wyzenbeek



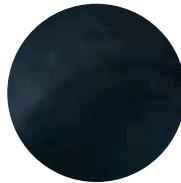
Aubergine



Autumn Leaf



Basil



Blue Marlin



Charcoal Gray



Cigar



Cognac



Fawn



Garnet



Granite



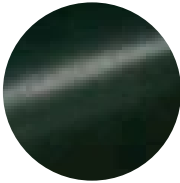
Kingswood



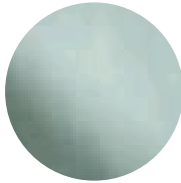
Lager



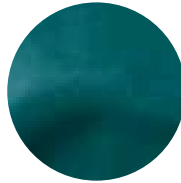
Limestone



Meadow Elk



Mediterranean



Mountain Spring



Pebble Taupe



Spanish Moss



Spruce



Taupe



Umber