



# Dakota

## Features

- Aniline leather featuring a lightly polished, translucent surface
- Vegetable retanned for a robust hand
- Hand stained to ensure authentic appearance and patina
- Vibrant color palette

### Avg. Hide Size

50 - 55 sq ft  
4.65 - 5.11 sq m

### Country of Origin

Thailand

### Finish

Aniline Plus

### Grain

Full Grain

### Configuration

Whole Hide

### Avg. Thickness

1-1.3mm

### Tannage

Chrome

### Character

Smooth

### Hide Type

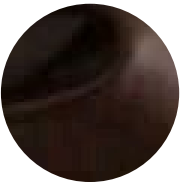
Bovine

### Testing

CA-117



Black



Charcoal



Crimson



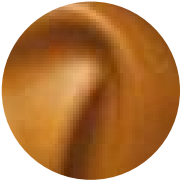
Dove



Evergreen



Fossil



Modern Saddle



Molasses



Moss



Putty



Sapphire



Tobacco Brown



Wine