



Burnham

Casual elegance describes this new leather from New Zealand's North Island. An aniline leather dressed with wax and oil that is then milled and polished. The tanner's artistry is seen in the burnished, polished surface that complements and contrasts with a velvety texture that showcases a luxurious tracking effect that will become more visually appealing with use and wear. The leather has a cool "drapey" hand that tailors beautifully on a variety of frames.

Features

- Aniline nubuck leather
- Waxed, oiled, and milled to achieve soft, drapey hand
- Exhibits worn-in aesthetic
- Natural characteristics will be visible

Avg. Hide Size

35 - 40 sq ft
3.25 - 3.72 sq m

Avg. Thickness

1-1.2mm

Country of Origin

New Zealand

Tannage

Chrome

Finish

Nubuck

Character

Tumbled

Grain

Nubuck

Hide Type

Bovine

Configuration

Whole Hide

Testing

CA-117, NFPA-260, ASTM D 2211 Elongation of Leather, ASTM D 4157-13 Wyzenbeek



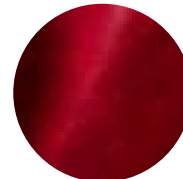
Beige



Black



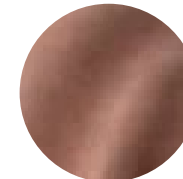
Cadet Blue



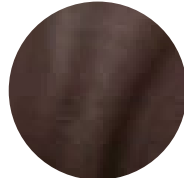
Cerise



Marmalade



Mauve



Molasses



Sea Salt



Shale



Sky



Slate



Solar



Sunflower



Sycamore