



# Brompton

Crafted at an Italian tannery with over one hundred and fifty years of experience, Brompton is a timeless, aniline plus leather that represents a blending of today's tanning technology with the dedication and skill of artisans spanning multiple generations.

## Features

- Aniline wax pull-up leather
- Exhibits dramatic highs and lows
- Hot wax tannage technique
- Natural characteristics will be visible

### Avg. Hide Size

50 - 55 sq ft  
4.65 - 5.11 sq m

### Avg. Thickness

1-1.2mm

### Country of Origin

Italy

### Tannage

Chrome

### Finish

Aniline Plus

### Character

Smooth

### Grain

Full Grain

### Hide Type

Bovine

### Configuration

Whole Hide

### Testing

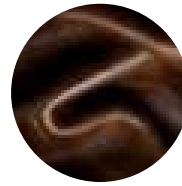
CA-117, NFPA-260, ASTM D 2211 Elongation of Leather, CAN/ULC-S102 25 Surface Burn of Building Materials and Assemblies, ASTM D 4157-13 Wyzenbeek



Black



Black and Blue



Brown



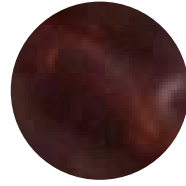
Chestnut



Spanish Moss



Vintage



Walnut



Wolf