



Bowtie Point

Discover how suede is born to be styled with the Point Collection. Bowtie Point features an intricate metallic pattern transfer on our Satin Suede base. This dynamic pattern creates a stunning visual effect on the suede's soft surface, injecting elements of dimension and texture that accentuate the leather's tactile qualities and luxurious nap. The result is a leather with enhanced durability that draws you in with its lavish glamour and modern elegance.

This is made to order. Production time is 2-3 weeks. Samples are stocked in limited quantity and may not be immediately available.

Features

- Intricate metallic pattern transfer
- Satin Suede base leather
- Luxurious nap

Avg. Hide Size

16-18 sq ft
1.49

Avg. Thickness

1.3-1.5 mm

Country of Origin

Spain

Tannage

Chrome

Finish

Suede

Character

Suede

Hide Type

Bovine

Configuration

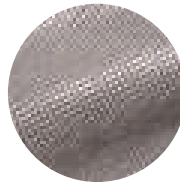
Double Butt

Testing

CA-117,
FMVSS302/CMVSS302
Flammability, ASTM D
4157 Wyzenbeek 75,000
cycles, IMO 652



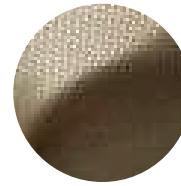
Sky Blue Hammered Silver



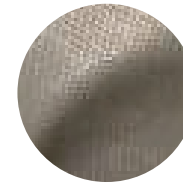
Smoke Hammered Silver



Stormy Hammered Silver



Taupe Antique Gold



Taupe Hammered Silver