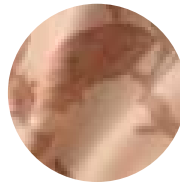
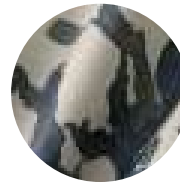




Blush



Flame



Lagoon



Teal

Botanique

Botanique is a vibrant floral design inspired by tropical fauna printed on a premium leather canvas. An exploration of linear mark making with tonal textures, it is an example of maximalism at its best for use in statement furniture or large scale interior projects.

The Bill Amberg Collection:

Inspired by shapes and silhouettes found in nature and in traditional textile craft, the designs found in the Bill Amberg Collection offer a broad range of options in color and scale to maximize their appeal in both commercial and residential applications. This collection features six beautifully detailed designs created in collaboration with the renowned leatherwork studio that are digitally printed on the world's finest leather.

[Learn More](#)

Lead Time: 4-6 weeks

Features

Country of Origin

Spain

Grain

Full Grain

Character

Light Pebble Grain

Finish

Aniline Plus

Pull-Up

No

Configuration

Whole Hide

Area

4.2-4.5 sqmts (45-55 sq ft) per hide

Avg. Hide Size

1400mm x 1700mm (55" x 67")
130.06

Avg Thickness

1.2-1.4mm

Raw Material

Premium European
Bovine Hides

Tannage

Wet White

Delivery

2-4 Weeks

Minimum Order Quantity

Fire Rating

1 Hide

Up to Class '0' (available upon request)

Testing

DIN EN 13334:

Flexometer DIN EN ISO

11640: Wet-Rubbing DIN

EN ISO 11640:

Perspiration-Rubbing DIN

EN ISO 11640:Dry

Rubbing ISO 105-B02:

Light Fastness DIN

53329: Tear-Strength IUF

420: Water Spotting