



Boa

The Boa collection features an exotic reptile-inspired transfer on our Satin Suede base. The dynamic pattern creates a stunning visual effect on the suede's soft surface, injecting elements of dimension and texture that accentuate the leather's tactile qualities and luxurious nap. The end result is a leather with enhanced durability that draws you in with its lavish glamour and modern elegance.

This is made to order. Production time is 2-3 weeks. Samples are stocked in limited quantity and may not be immediately available.

Features

- A soft drapey aniline suede
- Extensive color palette
- Luxurious tracking effect
- Water resistant properties

Avg. Hide Size

16 - 18 sq ft
1.49 - 1.67 sq m

Country of Origin

Spain

Base Leather

Satin Suede

Character

Suede

Hide Type

Bovine

Vert. Plate Ln

n/a

Hor. Plate Ln

59"

Testing

CA-117, NFPA-260

Avg. Thickness

1.3-1.5mm

Tannage

Chrome

Finish

Suede

Grain

Split

Configuration

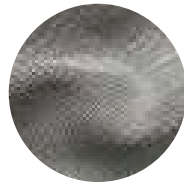
Double Butt

Vert. Repeat

n/a

Horz. Repeat

1.25"



Black White



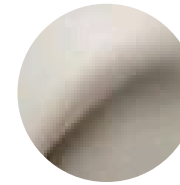
Blue Moon Bone



Chocolate Bronze Pearl



Cream Bone



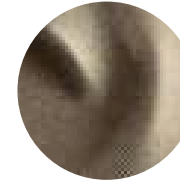
Cream White



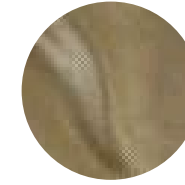
Espresso Bone



Glamour Bone



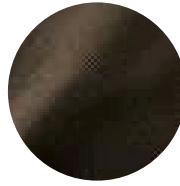
Glamour White



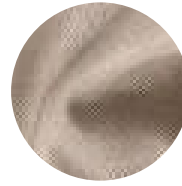
Natural Antique Gold Matte



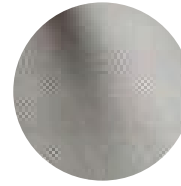
Pacific White



Smoke Black Matte



Smoke Bone



Stormy White

