



Athena

Athena is the first leather that merges today’s most innovative tanning technology with ALTA stain repellent technology. After years of development, Moore & Giles, applied: textiles and TENERIAS Omega in Spain were able to bring the same safe ALTA stain repellency science to leather that is found in many other fabric applications. Featuring a palette of this season’s most standout colors, ATHENA was created to offer all of the attributes of leather coupled with the peace of mind of ALTA technology to meet the demands of today’s modern lifestyles. ATHENA is smart, easy leather.

[Learn More](#)

Small minimum order quantities may apply.

Contact Us:

Phone: [800.737.0169](tel:800.737.0169)

Email: hello@mooreandgiles.com

or use our chat feature below

Features

- ALTA stain repellent technology
- Designed to meet the demands of modern lifestyles

Avg. Hide Size

45 sq ft
4.18

Avg. Thickness

1-1.2mm

Country of Origin

Spain

Tannage

Chrome

Finish

Semi-Aniline

Character

Smooth

Grain

Full Grain

Hide Type

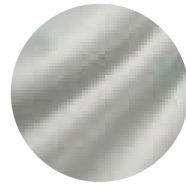
Bovine

Configuration

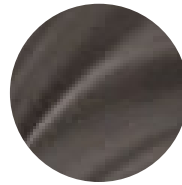
Whole Hide

Testing

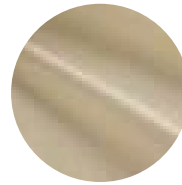
ASTM D 5053 Crocking,
ASTM D 2209 Tensile
Strength and Elongation,



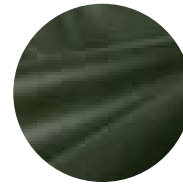
Arctic White



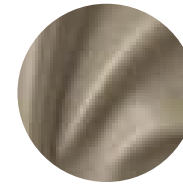
Cinder



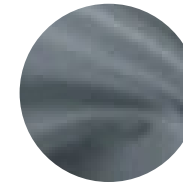
Eggshell



Fir



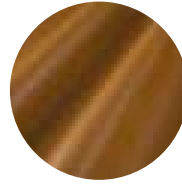
Iron



Mineral



Noir



Praline

Fluid Testing, ISO 105-
B02 Colorfastness to
Light, ASTM D 4157
Wyzenbeek, FAR 25.853,
FR Code Compliant: NFPA
260 and CAL TB117