



Acadia

Features

- Semi-aniline with natural aesthetic
- Rich, vibrant color palette
- Uniform color consistency
- Resistance to scratching
- Stain treatment added for top performance

Avg. Hide Size

50 sq ft
4.65

Avg. Thickness

1.1-1.3mm

Country of Origin

Italy

Tannage

Chrome

Finish

Semi-Aniline

Character

Smooth

Grain

Corrected

Hide Type

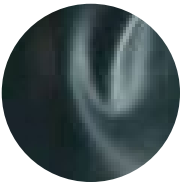
Bovine

Configuration

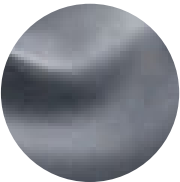
Whole Hide

Testing

CA-117, NFPA-260, AATCC 8 Colorfastness to Crocking, AATCC 16-3 Lightfastness, ASTM D 2097 Flex Testing of Finish, ASTM D 4157-13 Wyzenbeek, ASTM D 4705 Stitch Tear Strength, ASTM D 2208 Breaking Strength, ASTM D 2211 Elongation of Leather, ASTM D 6182 Flexibility and Adhesion of Leather, ASTM D 6012 Color Transfer, Fluid Resistance



Aegean



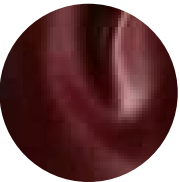
Denim



Driftwood



Iron



Maraschino



Sailboat



Sunrise



Thunder